

TLP-92111/A

- > High energy
- > Up to 3 A pulse capability
- > Instant voltage response
- > No passivation effect

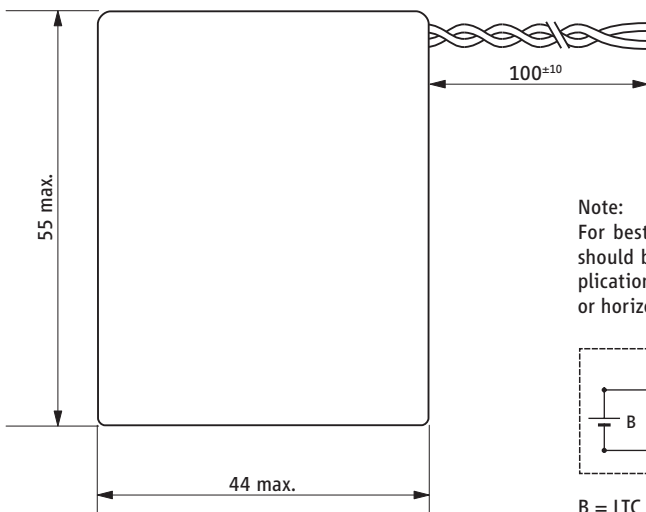
Performance Data

(Typical values for batteries stored at +25 °C for one year)

| | |
|--|-------------------|
| System | LTC and HLC |
| Nominal voltage | 3.6 V |
| Nominal capacity | 8.5 Ah |
| Nominal current | 3 mA |
| Max. 1 s pulse to 3 V | 3 A |
| Max. pulse length @ 0.5 A to 2.8 V | 1000 s |
| Delay time to 3 V @ 0.5 A | none |
| Weight | 100 g |
| Temperature range | -40 °C ... +85 °C |
| Capacity retention after 10 year storage | 93 % |

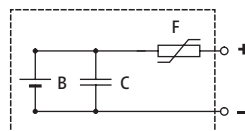


TLP-92111/A/SM



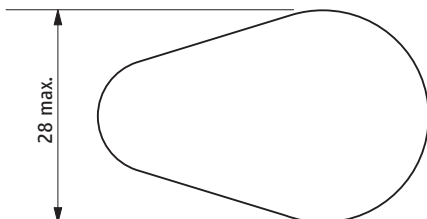
Note:

For best performance battery should be mounted in the application in upright or horizontal orientation.



B = LTC battery
C = HLC
F = PTC (optional)

Both the LTC battery and the HLC are UL recognized.



WARNING:

Risk of fire or explosion. Do not charge, incinerate, disassemble, heat above 100 °C, or expose contents to water.

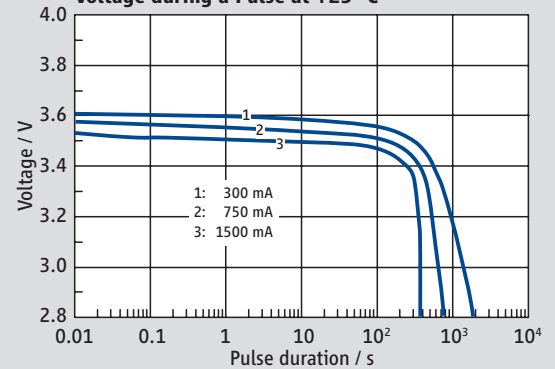
Available Terminations

TLP-92111/A/SM Flying leads

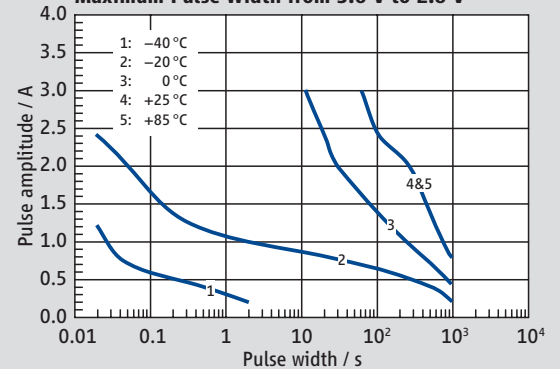
Catalogue No.

17 92111 101

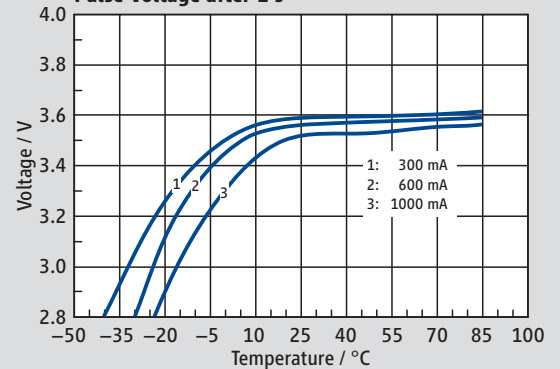
Voltage during a Pulse at +25 °C



Maximum Pulse Width from 3.6 V to 2.8 V



Pulse Voltage after 1 s



Available Capacity

